

# PROGNOST<sup>®</sup>-SILver

Condition Monitoring, Machine Protection, and ESD

# PROGNOST®-SILver rack

## 3 capabilities in one system

- ❑ Machine protection
- ❑ Condition monitoring
- ❑ Emergency shutdown device



# PROGNOST<sup>®</sup>-SILver Features 1



- ❑ For **all machinery** including outstanding capabilities on reciprocating equipment
- ❑ IEC 61508 **SIL3** certificate
- ❑ **68 input** channels on 17 input cards
- ❑ **30 relay outputs** onboard, and 24 digital inputs

# PROGNOST<sup>®</sup>-SILver Features 2

- ❑ **Installation in Hazardous Areas**  
IP 54 housings are sufficient
- ❑ **Hot swappable** cards
- ❑ Parallel monitoring of **8 machines** with speed reference plus **24 machines** with time based analyses
- ❑ **Redundant 24VDC** power supplies included

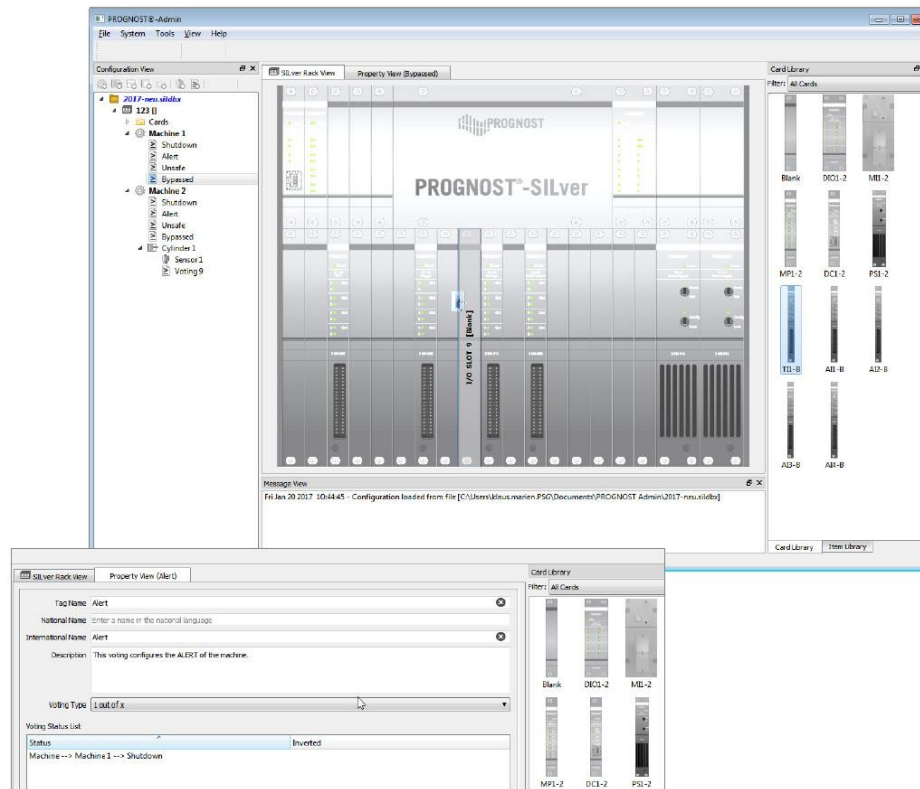


# PROGNOST<sup>®</sup>-SILver Signal Inputs



- ❑ **Compatible** with a high number of installed sensors
- ❑ Up to **272 temperature signals**
- ❑ **Intrinsically safe** channels
- ❑ **No additional barriers** required
  - ❑ Intrinsically safe Exi inputs on board
  - ❑ Galvanic isolation included

# PROGNOST®-Admin software



- ❑ User-friendly rack configuration with PROGNOST®-Admin
  - ❑ Cards and channels
  - ❑ Sensors and DCS inputs and outputs
  - ❑ International channel naming
  - ❑ Voting logic
  - ❑ Exception Ranges
  - ❑ Trip Multiplier and much more

# PROGNOST<sup>®</sup>-Silver features to be remembered

---



- ❑ More and better functions for reciprocating and all rotating machinery e.g. centrifuges
- ❑ Easy installation in Ex-Zone 2
- ❑ Hot Swappable input cards
- ❑ 30 relay outputs
- ❑ System control via digital inputs
- ❑ Max. 272 temperatures in one rack
- ❑ Easy configuration with PROGNOST<sup>®</sup>-Admin